



DEA No. RA0571996  
FL License # CMTL-0003  
CLIA No. 10D1094068

# Certificate of Analysis

## Compliance Test

**SPECTRUM SUPPLY CO.**  
2380 CAMINO VIDA ROBLE UNIT I  
CARLSBAD, CA. 92011

Batch # 001144  
Batch Date: 2022-04-29  
Extracted From: Hemp

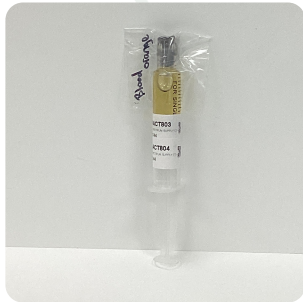
Test Reg State: Florida

Order # SPE220429-200001  
Order Date: 2022-04-29  
Sample # AACT803

Sampling Date: 2022-05-02  
Lab Batch Date: 2022-05-02  
Completion Date: 2022-05-04

Initial Gross Weight: 7.793 g  
Net Weight: 2.362 g

Number of Units: 1  
Net Weight per Unit: 1.000 g



Potency Tested

Product Image

**Potency 21 (LCUV) + Potency 8/10**

**Tested (LCUV)**

Specimen Weight: 55.630 mg

| Analyte               | Dilution (1:n) | LOD (%)  | LOQ (%) | Result (mg/g) | (%)     |
|-----------------------|----------------|----------|---------|---------------|---------|
| Delta-8 THC           | 1000.000       | 0.000026 | 0.0015  | 480.4400      | 48.0440 |
| Delta-8 THC-O Acetate | 100.000        | 0.000027 | 0.0003  | 236.3000      | 23.6300 |
| Delta-10 THC          | 10.000         | 0.000095 | 0.0015  | 7.200         | .720    |
| CBT                   | 10.000         | 0.0002   | 0.0015  | 5.1010        | 0.5101  |
| Delta-9 THC-O Acetate | 10.000         | 0.000077 | 0.0003  | 3.7380        | 0.3738  |
| Delta-8 THCV          | 10.000         | 0.00004  | 0.0015  | 2.4990        | 0.2499  |
| CBNA                  | 10.000         | 0.000095 | 0.0015  | 1.9420        | 0.1942  |
| CBD                   | 10.000         | 0.000054 | 0.0015  | 0.3380        | 0.0338  |
| Delta-9 THC           | 100.000        | 0.000013 | 0.0015  | <LOQ          | <LOQ    |
| CBL                   | 10.000         | 0.000035 | 0.0015  | <LOQ          | <LOQ    |
| CBDA                  | 10.000         | 0.00001  | 0.0015  | <LOQ          | <LOQ    |
| CBDV                  | 10.000         | 0.000065 | 0.0015  | <LOQ          | <LOQ    |
| CBDVA                 | 10.000         | 0.000014 | 0.0015  | <LOQ          | <LOQ    |
| THCV                  | 10.000         | 0.000007 | 0.0015  | <LOQ          | <LOQ    |
| THCVA                 | 10.000         | 0.000047 | 0.0015  | <LOQ          | <LOQ    |
| CBN                   | 10.000         | 0.000014 | 0.0015  | <LOQ          | <LOQ    |
| THCA                  | 10.000         | 0.000032 | 0.0015  | <LOQ          | <LOQ    |
| Exo-THC               | 10.000         | 0.00023  | 0.0015  | <LOQ          | <LOQ    |
| CBCA                  | 10.000         | 0.000107 | 0.0015  | <LOQ          | <LOQ    |
| CBG                   | 10.000         | 0.000248 | 0.0015  | <LOQ          | <LOQ    |
| CBGA                  | 10.000         | 0.00008  | 0.0015  | <LOQ          | <LOQ    |
| CBC                   | 10.000         | 0.000018 | 0.0015  | <LOQ          | <LOQ    |

**Potency Summary**

|                               |                                |
|-------------------------------|--------------------------------|
| Total THC<br>Not Detected     | Total CBD<br>0.340 mg          |
| Total CBG<br>mg               | Total CBN<br>1.700 mg          |
| Other Cannabinoids<br>72.808% | Total Cannabinoids<br>78.0718% |
| Total Delta 8<br>48.044%      | Total Delta 10<br>7.200 mg     |

Xueli Gao  
Ph.D., DABT  
Lab Toxicologist

Aixia Sun  
D.H.Sc., M.Sc., B.Sc., MT (AAB)  
Lab Director/Principal Scientist



Definitions and Abbreviations used in this report: \*Total CBD = CBD + (CBD-A \* 0.877), \*Total CBDV = CBDV + (CBDVA \* 0.87), \*Total THC = THCA-A \* 0.877 + Delta 9 THC, \*Total THCV = THCV + (THCVA \* 0.87), \*CBG Total = (CBGA \* 0.877) + CBG, \*CBN Total = (CBNA \* 0.877) + CBN, \*Total CBC = CBC + (CBCA \* 0.877), \*Total THC-O-Acetate = Delta 8 THC-O-Acetate + Delta 9 THC-O-Acetate, \*Other Cannabinoids Total = Total Cannabinoids - All the listed cannabinoids on the summary section, \*Total Detected Cannabinoids = Delta6a10a-THC + Delta8-THC + Total CBN + CBT + Delta8-THCV + Total CBG + Total CBD + Total THCV + CBL + Total THC + Total CBC + Total CBDV + Delta10-THC + Total THC-O-Acetate, \*Analyte Details above show the Dry Weight Concentrations unless specified as 12% moisture concentration. (mg/ml) = Milligrams per Milliliter, LOQ = Limit of Quantitation, LOD = Limit of Detection, Dilution = Dilution Factor (ppb) = Parts per Billion, (%) = Percent, (cfu/g) = Colony Forming Unit per Gram (cfu/g) = Colony Forming Unit per Gram, LOD = Limit of Detection, (µg/g) = Microgram per Gram (ppm) = Parts per Million, (ppm) = (µg/g), (aw) = aw (area ratio) = Area Ratio, (mg/Kg) = Milligram per Kilogram, \*Measurement of Uncertainty = +/- 10%

This report shall not be reproduced, without written approval, from ACS Laboratory. The results of this report relate only to the material or product analyzed. Test results are confidential unless explicitly waived otherwise. Accredited by a third-party accrediting body as a competent testing laboratory pursuant to ISO/IEC 17025 of the International Organization for Standardization.